An aerial, high-angle photograph of the Bank of Albania building, a large, modern, multi-story structure with a curved facade and many windows. The building is rendered in a light, semi-transparent style. The text is overlaid on the building. The main title is in large, bold, black font. The speaker's name and title are in a smaller, grey font. The department and institution are in an even smaller, grey font.

# Bank of Albania's Challenges during the Covid-19 Crisis

Argita Frashëri

Director

Financial Statistics Department

Bank of Albania

# Legislation on statistics

**BOA's Mision** is to compile impartial, objective and reliable statistics in the service of fulfilling the Bank's legal objectives as the central bank of the Republic of Albania and as a statistical agency within the National Statistical System.

- The 'Law On Bank of Albania', No. 8269, dated 23.12.1997 provides complementary legal mandate to the BOA to compile the balance of payments of Albania

[https://www.bankofalbania.org/web/Law\\_No\\_8269\\_dated\\_23\\_12\\_1997\\_On\\_Bank\\_of\\_Albania\\_204\\_2.php?kc=0,28,0,0,0](https://www.bankofalbania.org/web/Law_No_8269_dated_23_12_1997_On_Bank_of_Albania_204_2.php?kc=0,28,0,0,0)

- National Statistical Law No.17/2018 "On Official Statistics", as amended,  
<http://www.instat.gov.al/media/3972/law-no17-2018-on-official-statistics.pdf>

- New Official Statistics National Programme 2017-2021

[http://www.instat.gov.al/media/3705/psz-2017-2021\\_english.pdf](http://www.instat.gov.al/media/3705/psz-2017-2021_english.pdf)

- Decision 2017-19, of the Supervisory Council of the Bank of Albania on the "Code of Practice in the Bank of Albania"

# Data exchange between institutions

BOA exchanges a number of statistical sets with other national institutions.

*(INSTAT, Ministry of Finance, National agency for natural resources; Sometimes MoU are required)*

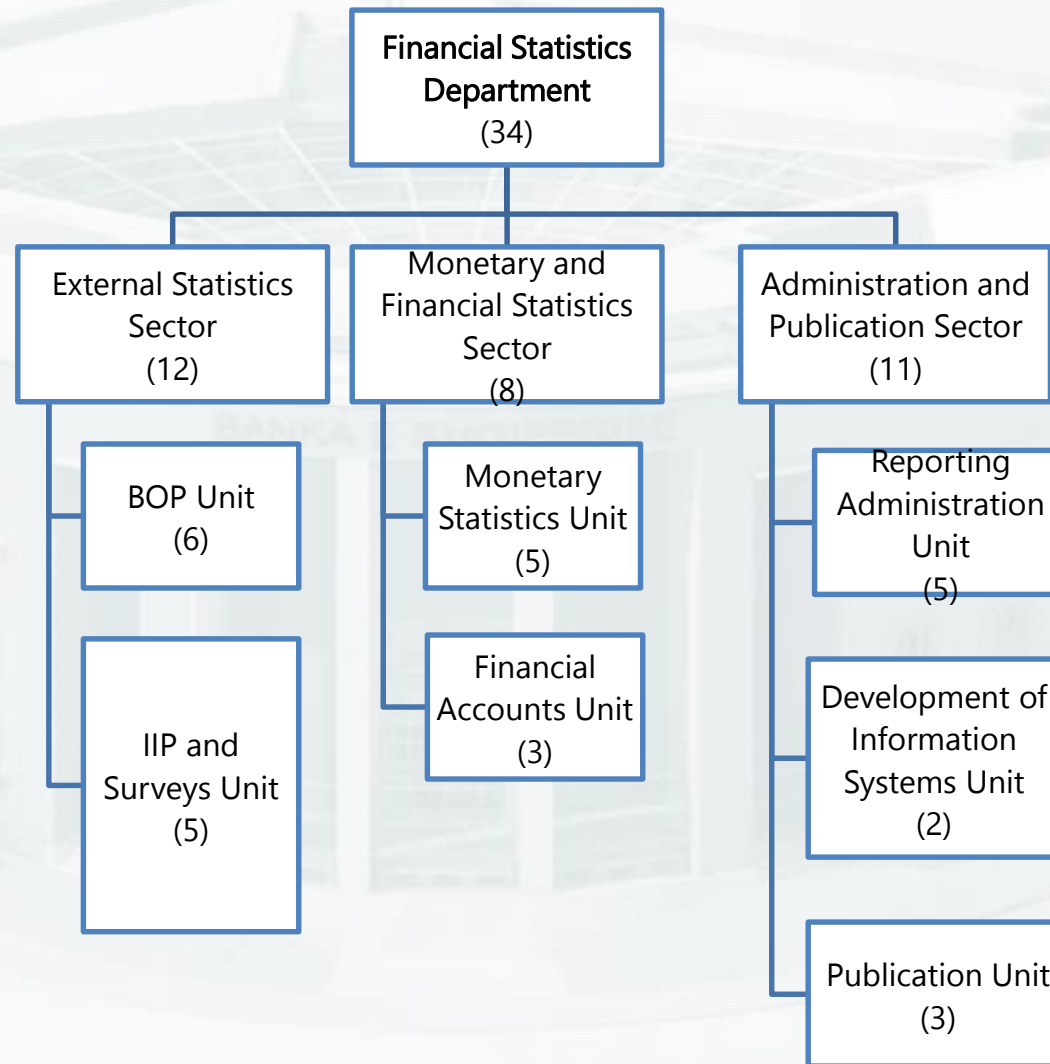
## **Working groups in place:**

1. Working group between institutions related to national accounts, monetary and ES statistics.
2. Cooperation with the Financial Supervision Authority regarding the statistical information for the financial nonbanking system under FSA.
3. Reports to IMF, EUROSTAT and ECB;
  - a) Regional project of IMF on government finances and EDP;
  - b) The e-GDDS project; collaborations for switching to SDDS.
4. The Progres Raport on integration - chapter 18. Statistics.

## **Data exchange between institutions:**

1. DI register (BOA, INSTAT)
2. Eurobond issued by GG (MoF, BOA)
3. Coordination of BOA surveys (BOA, INSTAT)
4. Trade in goods c.i.f (from INSTAT to BOA), BOP (from BOA to INSTAT for SNA purposes).

# Financial Statistics Department



# Implications for Central Banks during the Covid-19 crisis

*The outbreak of COVID-19 (Coronavirus) and measures implemented to limit its spread have impacted the routine compilation and dissemination of official statistics. The collection of official data has become increasingly difficult with the temporary closure of non-essential businesses and some public offices and restrictions of movement.*

*Missing source data have potentially affect the compilation of price statistics, balance of payments, and national accounts data in the last months.*

## - **Frameworks**

- Need for revised frameworks to support policy making;
- Comprehensive economic understanding;
- Flexibility to address growing users' needs.

# Implications for Central Banks during the Covid-19 crisis

- Delays from direct reporters;
- Necessity to shift to alternative mechanisms for data collection;
- Develop mechanisms to deal with non-response;
- Provide more information to core users;
- The risk of misreporting the unusual activities of the General Government;
- Reduce as much as possible the publication of low quality data;
- Methodological innovations.

# Impact of COVID-19

## IMF and Eurostat assisted countries in compiling statistics facing new challenges from COVID-19:

- *IMF Special Series on Statistical Issues to Respond to COVID-19-ensuring-continuity-in-the-production-of-external-sector-statistics.pdf*

- [https://ec.europa.eu/eurostat/documents/10186/10693286/BOP\\_guidance.pdf](https://ec.europa.eu/eurostat/documents/10186/10693286/BOP_guidance.pdf)

The most affected components: travel, compensation of employees and workers' remittances

<i>in millions of euro</i>	Jan-19	Feb-19	Mar-19	Apr-19	May-19	Jun-19	Jul-19	Aug-19	Sep-19	Oct-19	Nov-19	Dec-19	Jan-20	Feb-20	Mar-20	Apr-20	May-20	Jun-20	Quarterly change y.o.y
<b>Current account</b>	-76	-95	-99	-113	-131	-52	-43	-5	-128	-95	-109	-142	-29	-87	-118	-121	-137	-120	28%
Credit	374	375	439	486	466	517	618	667	455	524	431	484	453	431	281	213	252	343	-45%
Debit	451	470	538	599	597	569	661	673	583	618	540	625	482	518	399	334	389	463	-33%
<b>Goods</b>	-199	-247	-249	-268	-265	-249	-295	-276	-254	-292	-258	-294	-196	-243	-214	-188	-213	-255	
Credit	59	59	92	80	88	74	77	74	75	82	73	73	64	73	63	48	63	60	-29%
Debit	258	305	341	348	353	323	371	350	329	374	331	367	261	316	276	236	276	315	-19%
<b>Services</b>	91	102	94	80	59	119	192	198	55	134	85	55	122	97	49	49	43	47	
Credit	221	218	238	267	244	306	407	463	250	297	231	261	274	243	131	92	91	135	-61%
Debit	130	116	144	188	184	186	215	265	196	164	146	206	152	145	82	42	48	88	-68%
<b>Travel</b>	20	23	33	6	11	65	120	141	-6	50	31	7	43	43	7	0	-7	4	
Credit	109	103	137	153	146	207	283	358	142	164	132	151	152	139	55	5	7	50	-88%
Debit	88	80	104	147	135	143	163	216	148	113	101	144	110	96	48	5	13	46	-85%
<b>Compensation of employees</b>	16	13	18	33	30	34	25	31	21	34	19	27	21	18	7	0	3	40	
Credit	17	16	20	36	33	36	27	34	23	36	21	29	23	20	9	2	5	42	-54%
Debit	2	2	3	3	3	2	2	3	2	2	2	3	2	2	2	2	1	2	
<b>Workers' remittances</b>	47	49	54	62	62	61	66	57	63	60	58	64	52	57	43	26	40	54	
Credit	47	49	54	62	62	61	66	57	63	60	58	64	52	57	43	26	40	54	-35%
Debit	0	0	0	0	0	0	0	0	0	0	0	0	0	0	0	0	0	0	

# Impact of COVID-19

- No delays on data production
- Border surveys have been stopped as of first quarter of 2020 (travel survey and migrants survey)

## Travel solution

The main indicator is the number of travellers, provided regularly from the Ministry of Interior;

The coefficients on average expenditure and duration of stay were based on the same corresponding quarter of last year, indexed with the price of 2019. During April and May, most of the travellers were for business purposes (seasonal workers) and health related and those for repatriation after the lockdown. In June 15<sup>th</sup>, the borders were reopened, but other countries has restrictions for Albania for tourism purposes (Montenegro, Macedonia, Greece, Italy and other EU countries, except Kosovo).

## Compensation of employees

No movements of seasonal workers starting from March 14<sup>th</sup>. An agreement between Albania and Greece for permission of travelling of approx. 15,000 Albanian seasonal workers has been put in force in mid May.

For those who have been stuck abroad (still earning & sending money via official channels), an estimation is done based on the average number of the first quarter and on those jobs that didn't stop during the lockdown (such as agriculture production, manufacturing, hospitals).



# Impact of COVID-19

## Workers' remittances

Data from ITRS and MTO are provided regularly on monthly basis.

No movements of migrants in/out Albania starting from March 14<sup>th</sup>. The result: **NO CASH!**

The percentage of *cash remittances* was estimated zero for the consecutive months of April and May.

The situation started to change, in the middle of June. The *cash remittances* was estimated at 11 %.

The *cash percentage* was applied only to those countries that initiated a gradually movement of people (for essential reasons only) such as Greece, Italy, United Kingdom and Germany.

# Impact of COVID-19

## FDI and related income

Less new FDI activity during the period however there were investment flows from parents to support affiliates with difficulties.

Reduction in accounting profits and activity in general.

Limited dividends distributed.

- ❖ To overcome the challenges we have checked carefully with the main contributors and use of the usual cross-checking ITRS source.
- ❖ Need for nowcasting models with different scenarios depending on the sector of the economy.

# ESS Automation Project

- Project proposal dated end of 2016
- The approval by Management dated end of 2018, to start the procurement procedures.
- The project started February 2019 and contract duration was 1 year.
- The main objective of the project of “External Sector Statistics Compilation System” is to establish a robust, modern and sustainable environment for compiling statistics according to international standards.
- The new system will solve the following problems:
  - Manually processing of statistical data
  - Inefficient use of human resources dealing with data processing due to high load of mechanical tasks
  - High exposure to operational and reputational risk
  - Qualitative and quantitative differences in data reporting and dissemination comparing with other European countries
  - Lack of centralization of the data collection from reporting sources
  - Lack of standardization of inputs and outputs at the Department of Financial Statistics therefore jeopardizing the macroeconomic reconciliation with other datasets
  - Numerous difficulties to control and monitor data accuracy as well as to trace revision history
- The solution has to provide flexible interfaces to collect data, run validations, estimation, and calculations, and disseminate in line with the set of ESS in line with the Codification Database and Browser, published by the IMF as well as in line with the Standard Data Metadata Exchange (SDMX) utilized by Eurostat.

# ESS Automation Project

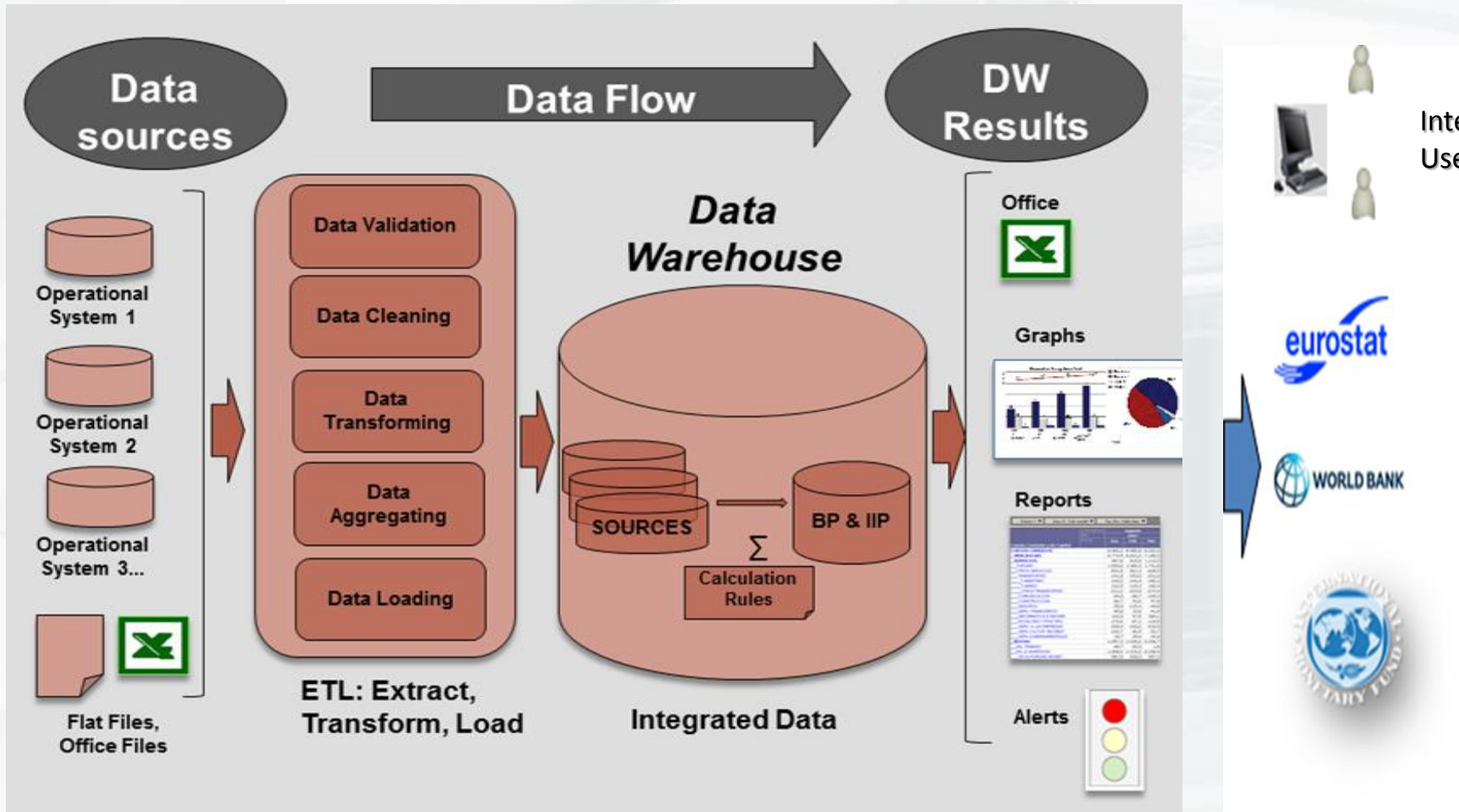
Current state



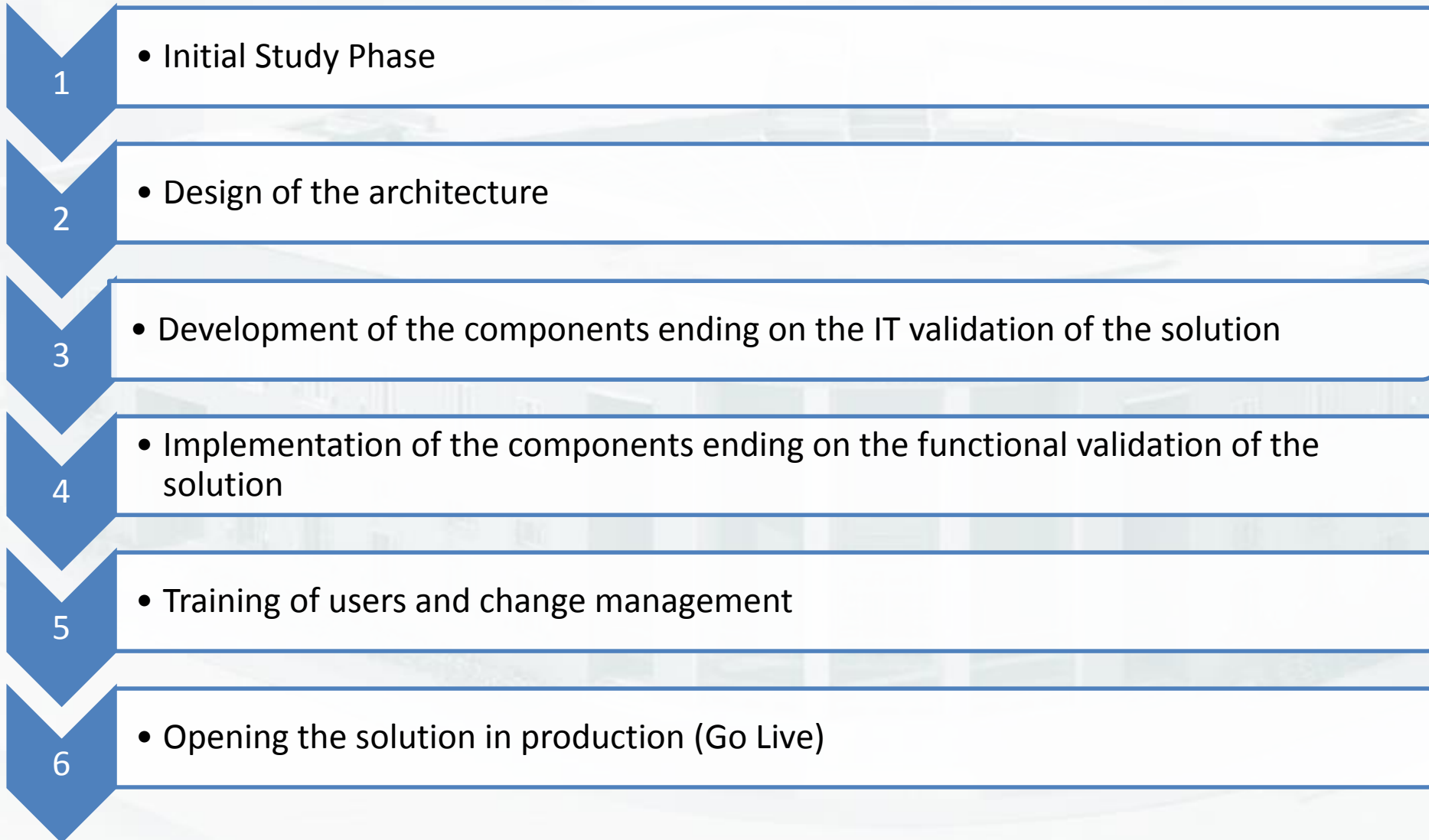
**Inventarization of all sources** is a matrix of all sources, actual schema workflow used for statistical production and outputs.

# ESS Automation Project

Future state



# ESS Automation Project



# ESS Automation Project

To define the granularity of the data- Use of Eurostat codification (IMF-ESTAT conversion table)

## The base for inputs

Balance of Payments, BPM6 Methodology		Additional items requested by the IMF		
Country Name:		Series requested only by Eurostat/ECB and not by the IMF (n		
Currency:	Domestic Currency	Series requested by the ECB, on voluntary basis by Eurostat a		
Scale:	Million	XDC		
Indicator	SDMX Code	Old Code	Code	
BCA_BP6_XDC	<b>Current account</b>	Q.N.#.W1.S1.S1.T.B.CA._Z._Z._Z.S._T._X.N	109999.B.X.N	BCA_BP6_XDC
BXCA_BP6_XDC	<b>Credit</b>	Q.N.#.W1.S1.S1.T.C.CA._Z._Z._Z.S._T._X.N	109999.C.X.N	BXCA_BP6_XDC
BMCA_BP6_XDC	<b>Debit</b>	Q.N.#.W1.S1.S1.T.D.CA._Z._Z._Z.S._T._X.N	109999.D.X.N	BMCA_BP6_XDC
BGS_BP6_XDC	<b>Goods and services</b>	Q.N.#.W1.S1.S1.T.B.GS._Z._Z._Z.S._T._X.N	129999.B.X.N	BGS_BP6_XDC
BXGS_BP6_XDC	<b>Credit</b>	Q.N.#.W1.S1.S1.T.C.GS._Z._Z._Z.S._T._X.N	129999.C.X.N	BXGS_BP6_XDC
BMGS_BP6_XDC	<b>Debit</b>	Q.N.#.W1.S1.S1.T.D.GS._Z._Z._Z.S._T._X.N	129999.D.X.N	BMGS_BP6_XDC
BG_BP6_XDC	<b>Goods</b>	Q.N.#.W1.S1.S1.T.B.G._Z._Z._Z.S._T._X.N	1A9999.B.X.N	BG_BP6_XDC
BXG_BP6_XDC	<b>Credit</b>	Q.N.#.W1.S1.S1.T.C.G._Z._Z._Z.S._T._X.N	1A9999.C.X.N	BXG_BP6_XDC
BMG_BP6_XDC	<b>Debit</b>	Q.N.#.W1.S1.S1.T.D.G._Z._Z._Z.S._T._X.N	1A9999.D.X.N	BMG_BP6_XDC
BGM_BP6_XDC	<b>General merchandise on a balance of payments basis</b>	Q.N.#.W1.S1.S1.T.B.G1._Z._Z._Z.S._T._X.N	1AA000.B.X.N	BGM_BP6_XDC
BXGM_BP6_XDC	<b>Credit</b>	Q.N.#.W1.S1.S1.T.C.G1._Z._Z._Z.S._T._X.N	1AA000.C.X.N	BXGM_BP6_XDC
BMGM_BP6_XDC	<b>Debit</b>	Q.N.#.W1.S1.S1.T.D.G1._Z._Z._Z.S._T._X.N	1AA000.D.X.N	BMGM_BP6_XDC
BGMZ_BP6_XDC	<b>Of which Re-exports (credit)</b>	Q.N.#.W1.S1.S1.T.C.G1Z._Z._Z._Z.S._T._X.N	1AA00Z.C.X.N	BGMZ_BP6_XDC
BXGT_BP6_XDC	<b>Net exports of goods under merchanting (credit)</b>	Q.N.#.W1.S1.S1.T.C.G2._Z._Z._Z.S._T._X.N	1AB000.C.X.N	BXGT_BP6_XDC
BXXGT_BP6_XDC	<b>Goods acquired under merchanting (negative credit)</b>	Q.N.#.W1.S1.S1.T.C.G21._Z._Z._Z.S._T._X.N	1AB100.C.X.N	BXXGT_BP6_XDC
BXMG_T_BP6_XDC	<b>Goods sold under merchanting (credit)</b>	Q.N.#.W1.S1.S1.T.C.G22._Z._Z._Z.S._T._X.N	1AB200.C.X.N	BXMG_T_BP6_XDC
BGN_BP6_XDC	<b>Nonmonetary gold</b>	Q.N.#.W1.S1.S1.T.B.G2._Z._Z._Z.S._T._X.N	1AC000.B.X.N	BGN_BP6_XDC
BXGN_BP6_XDC	<b>Credit</b>	Q.N.#.W1.S1.S1.T.C.G2._Z._Z._Z.S._T._X.N	1AC000.C.X.N	BXGN_BP6_XDC
BMGN_BP6_XDC	<b>Debit</b>	Q.N.#.W1.S1.S1.T.D.G2._Z._Z._Z.S._T._X.N	1AC000.D.X.N	BMGN_BP6_XDC
BS_BP6_XDC	<b>Services</b>	Q.N.#.W1.S1.S1.T.B.S._Z._Z._Z.S._T._X.N	1B9999.B.X.N	BS_BP6_XDC
BXS_BP6_XDC	<b>Credit</b>	Q.N.#.W1.S1.S1.T.C.S._Z._Z._Z.S._T._X.N	1B9999.C.X.N	BXS_BP6_XDC
BMS_BP6_XDC	<b>Debit</b>	Q.N.#.W1.S1.S1.T.D.S._Z._Z._Z.S._T._X.N	1B9999.D.X.N	BMS_BP6_XDC
BSM_BP6_XDC	<b>Manufacturing services on physical inputs owned by others</b>	Q.N.#.W1.S1.S1.T.B.SA._Z._Z._Z.S._T._X.N	1BA000.B.X.N	BSM_BP6_XDC
BXSM_BP6_XDC	<b>Credit</b>	Q.N.#.W1.S1.S1.T.C.SA._Z._Z._Z.S._T._X.N	1BA000.C.X.N	BXSM_BP6_XDC
BMSM_BP6_XDC	<b>Debit</b>	Q.N.#.W1.S1.S1.T.D.SA._Z._Z._Z.S._T._X.N	1BA000.D.X.N	BMSM_BP6_XDC
BSMR_BP6_XDC	<b>Goods for processing in reporting economy</b>	Q.N.#.W1.S1.S1.T.B.SAy._Z._Z._Z.S._T._X.N	1BA100.B.X.N	BSMR_BP6_XDC
BXS_MR_BP6_XDC	<b>Credit</b>	Q.N.#.W1.S1.S1.T.C.SAy._Z._Z._Z.S._T._X.N	1BA100.C.X.N	BXS_MR_BP6_XDC
BMS_MR_BP6_XDC	<b>Debit</b>	Q.N.#.W1.S1.S1.T.D.SAy._Z._Z._Z.S._T._X.N	1BA100.D.X.N	BMS_MR_BP6_XDC
BSMA_BP6_XDC	<b>Goods for processing abroad</b>	Q.N.#.W1.S1.S1.T.B.SAz._Z._Z._Z.S._T._X.N	1BA200.B.X.N	BSMA_BP6_XDC
BXSMA_BP6_XDC	<b>Credit</b>	Q.N.#.W1.S1.S1.T.C.SAz._Z._Z._Z.S._T._X.N	1BA200.C.X.N	BXSMA_BP6_XDC
BMSMA_BP6_XDC	<b>Debit</b>	Q.N.#.W1.S1.S1.T.D.SAz._Z._Z._Z.S._T._X.N	1BA200.D.X.N	BMSMA_BP6_XDC
BSR_BP6_XDC	<b>Maintenance and repair services n.i.e.</b>	Q.N.#.W1.S1.S1.T.B.SB._Z._Z._Z.S._T._X.N	1BB000.B.X.N	BSR_BP6_XDC
BXSR_BP6_XDC	<b>Credit</b>	Q.N.#.W1.S1.S1.T.C.SB._Z._Z._Z.S._T._X.N	1BB000.C.X.N	BXSR_BP6_XDC
BMSR_BP6_XDC	<b>Debit</b>	Q.N.#.W1.S1.S1.T.D.SB._Z._Z._Z.S._T._X.N	1BB000.D.X.N	BMSR_BP6_XDC
BSTR_BP6_XDC	<b>Transport</b>	Q.N.#.W1.S1.S1.T.B.SC._Z._Z._Z.S._T._X.N	1BC000.B.X.N	BSTR_BP6_XDC
BXSTR_BP6_XDC	<b>Credit</b>	Q.N.#.W1.S1.S1.T.C.SC._Z._Z._Z.S._T._X.N	1BC000.C.X.N	BXSTR_BP6_XDC
BMSTR_BP6_XDC	<b>Debit</b>	Q.N.#.W1.S1.S1.T.D.SC._Z._Z._Z.S._T._X.N	1BC000.D.X.N	BMSTR_BP6_XDC

## The outputs

USERS	Outputs
CEFTA	12
EUROSTAT	11
IMF	31
UN	6
WB	10
Website	10
Other users	4

# ESS Automation Project

INPUT	Description of information	Frequency	
MTO-IN	Money transfers by country	Monthly	
MTO-OUT	Money transfers by country	Monthly	
ITRS	Individual transactions	Monthly	
	Input coefficient expert judgement		
Form survey	1000 questionnaires migrant survey	Semiannually	Gjate perpunimit te pyetesoreve
Ex rate		Monthly and semiannually	Sheet " survey results" te jete nj
<b>RULE1</b>	<b>Rule Name</b>	<b>Rule Formula</b>	<b>Remarks</b>
	Conversion of Information in unic	Sum total Monedha (MTO-IN *Monthly Ex rate versus Euro)	
<b>RULE2</b>	<b>Rule Name</b>	<b>Rule Formula</b>	<b>Remarks</b>
	Conversion of Information in unic	Sum total (MTO-OUT *Monthly Ex rate versus Euro)	
<b>RULE3</b>	<b>Rule Name</b>	<b>Rule Formula</b>	<b>Remarks</b>
	Migrants transfers (Version 1)	SUM (Output Rule1, filter MTO-IN, between individuals) *Input coefficient migrants transfers	by country
<b>RULE4</b>	<b>Rule Name</b>	<b>Rule Formula</b>	<b>Remarks</b>
	Migrants transfers (Version 2)	SUM (Output Rule1, filter MTO-IN, between individuals) = up to 300 Euro	by country
<b>RULE5</b>	<b>Rule Name</b>	<b>Rule Formula</b>	<b>Remarks</b>
	Personal transfers by MTO	SUM (Output Rule1, filter MTO-IN, between individuals) - Output Rule 3 (or Output Rule 4)	by country
<b>RULE6</b>	<b>Rule Name</b>	<b>Rule Formula</b>	<b>Remarks</b>
	Personal transfers by MTO	SUM (Output Rule1 MTO-OUT, between individuals)	by country
<b>RULE7</b>	<b>Rule Name</b>	<b>Rule Formula</b>	<b>Remarks</b>
	Other business services n.i.e.	SUM (Output Rule1 MTO-IN, else than between individuals)	by country
<b>RULE8</b>	<b>Rule Name</b>	<b>Rule Formula</b>	<b>Remarks</b>
	Other business services n.i.e.	SUM (Output Rule1 MTO-OUT, else than between individuals)	by country
<b>RULE9</b>	<b>Rule Name</b>	<b>Rule Formula</b>	<b>Remarks</b>
	Migrants transfers	SUM (ITRS) group by description code " remittances +financial aid" filter inflow converted in euro by mon	by country
<b>RULE10</b>	<b>Rule Name</b>	<b>Rule Formula</b>	<b>Remarks</b>
	total money remitted in euro	Input (Formsurvey Q.5) / average semiannually Ex rate versus Euro)	by each questionnaires
<b>RULE11</b>	<b>Rule Name</b>	<b>Rule Formula</b>	<b>Remarks</b>
	Total money remitted by Cash1	Input Formsurvey (Q6.1) as frequency of remittances*value of money remitted/avg semiannually ex r	by each questionnaire
<b>RULE12</b>	<b>Rule Name</b>	<b>Rule Formula</b>	<b>Remarks</b>
	Total money remitted by Cash2	Input Formsurvey (Q6.2) as frequency of remittances*value of money remitted/avg semiannually ex r	by each questionnaire
<b>RULE13</b>	<b>Rule Name</b>	<b>Rule Formula</b>	<b>Remarks</b>
	Total money remitted by Banks	Input Formsurvey (Q6.3) as frequency of remittances*value of money remitted/avg semiannually ex r	by each questionnaire
<b>RULE14</b>	<b>Rule Name</b>	<b>Rule Formula</b>	<b>Remarks</b>
	Total money remitted by MTO	Input Formsurvey (Q6.4) as frequency of remittances*value of money remitted/avg semiannually ex r	by each questionnaire
<b>RULE15</b>	<b>Rule Name</b>	<b>Rule Formula</b>	<b>Remarks</b>
	Percentage of cash by country	Output (Rule11+ Rule 12)/ Output (Rule 10)	by country
<b>RULE16</b>	<b>Rule Name</b>	<b>Rule Formula</b>	<b>Remarks</b>
	Count of cash by country	Count of Output (Rule11+ Rule 12)	by country
<b>RULE17</b>	<b>Rule Name</b>	<b>Rule Formula</b>	<b>Remarks</b>
	Average Percentage of cash	Output (Rule11+ Rule 12)/ Output (Rule 10)	in total
<b>RULE18</b>	<b>Rule Name</b>	<b>Rule Formula</b>	<b>Remarks</b>
	Imputation of percentage of cash	If Output Rule15 (Count of Cash is =>30, than Sum of (Output Rule3+Output Rule9)*Output Rule15/(1-Out	by country
<b>RULE19</b>	<b>Rule Name</b>	<b>Rule Formula</b>	<b>Remarks</b>
	total migrants transfers by countr	Output Rule3+ Output Rule 18	by country
<b>RULE20</b>	<b>Rule Name</b>	<b>Rule Formula</b>	<b>Remarks</b>
	Personal transfers	Output Rule5+ Output Rule 19	by country

All working files were converted in rules. The transformation of input files from data sources to the final code-ready to use for outputs

Rule ID	Destination Table	FREQ	ADJUSTMENT	REF_AREA	COUNTERPART_AREA	REF_SECTOR	COUNTERPART_SECTO	FLOW_STOCK	ACCOUNTING_ENTRY	INT_AC_ITEM
RULE19	A-ITSS-eurostat	M	N	AL	COUNTRY_ID	S1W	S1	T	C	D752W
RULE5	A-ITSS-eurostat	M	N	AL	COUNTRY_ID	S1W	S1	T	C	D752O
RULE6	A-ITSS-eurostat	M	N	AL	COUNTRY_ID	S1W	S1	T	D	D752O
RULE7	A-ITSS-eurostat	M	N	AL	COUNTRY_ID	S1W	S1	T	C	SJ35Z
RULE8	A-ITSS-eurostat	M	N	AL	COUNTRY_ID	S1W	S1	T	D	SJ35Z
Rule20	A-ITSS-eurostat	M	N	AL	COUNTRY_ID	S1W	S1	T	C	D752



# ESS Automation Project

Codification of all inputs according to Data Model developed by the IT company and to be ready for the system

Table Level Setting	Values	Description										<a href="#">Back to Index</a>
Table Name	ITRS_FAC_F1_F2	Physical table name (use square brackets as necessary)										<a href="#">Home Page</a>
Table Type	Fact	Dimension, Fact, Audit, or Utility										
Table View	Input	Reference, Mapping, Input, Calculation										
Display Name	Client Transactions (F1 and F2 ITRS)	Display or business name of the table (if this does not match the Worksheet name, the diagram links will not work)										
Database Schema	STG	Schema name for this table (you must create the schema in the database first -leave blank for default)										
Table Description	Client Transactions (F1 and F2 ITRS)	Brief description of the contents of this table										
Used In Models		List of business process dimensional models using this table										
Generate Script?	N	Y or N										
Target												
Column Name	Display Name	Description	Datatype	Size	Precision	Key?	FK To	NULL?	Default Value	Example Values	Comments	
Extended Property?	Y	Y					Y			Y	Y	
SID	SID	SID of record	bigint			PK		N		1,23		
BANK_NAME	Bank name		varchar	140								
ORDERING_CUSTOMER_CODE	Ordering Customer Code		varchar	140								
ORDERING_CUSTOMER_NAME	Ordering Customer Name		varchar	140								
ORDERING_COUNTRY_CODE	Ordering Country Code		varchar	140		FK	DWHL2.REF_DIM_COUNTRY.SID					
CURRENCY_CODE	Currency Code		varchar	140		FK	DWHL2.REF_DIM_CURRENCY.SID					
ORIGINAL_CURRENCY_VALUE	Original Currency Value		decimal	21	4							
LOCAL_CURRENCY_VALUE_MLN	Local Currency Value in MLN		decimal	21	4						Calculation - Convert to ALL ( Average Monthly Rate) and MLN ( divide by 1000000 )	
BENEFICIARY_CODE	Beneficiary Code		varchar	140								
BENEFICIARY_CUSTOMER_NAME	Beneficiary Customer Name		varchar	140								
BENEFICIARY_COUNTRY_CODE	Beneficiary Country Code		varchar	140		FK	DWHL2.REF_DIM_COUNTRY.SID					
ORIGINAL_DESCRIPTION_TRANSACTION	Original description of transaction		varchar	899								
TRANSACTION_DESCRIPTION	Transaction description		varchar	899		FK	DWHL2.REF_DIM_ITRS_TRANS_CODE.SID					
TRANSACTION_CODE	Transaction Code		varchar	140								
BOA_TRANSACTION_DESCRIPTION	BOA Transaction Description		varchar	899		FK	DWHL2.REF_DIM_ITRS_TRANS_CODE.SID					
BOA_TRANSACTION_CODE	BOA Transaction Code		varchar	140							Mapping - TRANSACTION_CODE.REF_DIM_ITRS_TRANS_CODE	
TRANSACTION_TYPE	Type of transaction		varchar	140								
TRANSACTION_DATE	Transaction Date		datetime									
SOURCE	Transaction Source		varchar	140								
INITIAL_STATUS	Initial Status											
ENDING_STATUS	Ending Status		varchar	140							From Flow - Ending Status	

# ESS Automation Project

Testing inputs, Upload and Validation, Correction based on warnings and errors on reference tables

Authorization Dashboard / File Data Upload / Load Cycle / 20190430 / General Data Validation Log

General Data Validation Log

Enter text to search...

TABLE	VALIDATION TYPE	FIELD
TABLE: STG.SEC_FAC_F8_4_LIABILITY_OTHER (Count=1)		
TABLE: STG.SEC_FAC_SECURITIES_SUMMARY (Count=1)		
TABLE: STG.TRV_FAC_RES_SURVEY (Count=36) (Continued on the next page)		
VALIDATION TYPE: PRE CALCULATION (Count=36) (Continued on the next page)		
FIELD: (Count=36) (Continued on the next page)		
<input type="checkbox"/> 2046	PACKAGE_PER_PERSON should be EQUAL to PACKAGE_TICKET+PACKAGE...	WARNING
<input type="checkbox"/> 2206	PACKAGE_PER_PERSON should be EQUAL to PACKAGE_TICKET+PACKAGE...	WARNING
<input type="checkbox"/> 2290	PACKAGE_PER_PERSON should be EQUAL to PACKAGE_TICKET+PACKAGE...	WARNING
<input type="checkbox"/> 2294	PACKAGE_PER_PERSON should be EQUAL to PACKAGE_TICKET+PACKAGE...	WARNING
<input type="checkbox"/> 2317	PACKAGE_PER_PERSON should be EQUAL to PACKAGE_TICKET+PACKAGE...	WARNING

Page Size: 10

L1 - Charter - Section Mapping / L1 - Transport Method Codes / L1 - Extended Procedures Codes / L1 - ITRS Transaction Descriptions / L1 - MCC Codes

L1 - MCC Codes

Enter text to search...

SID	MCC_CODE	TRANSACTION_CODE	TRANSACTION_DESCRIPTION	STATUS_INDICATOR
	1 0742	914.1BL200	Tarifa per shërbime mjekësore të siguruar...	
	2 0763	914.1BK300	Tarifa për shërbime arkitektonike	
	3 0780	914.1BK300	Fatura për mallra me deklarate doganore	
	4 1520	914.1BK300	Tarifa për shërbime menaxhimi dhe marë...	
	5 1711	914.1BK300	Bileta transporti ajror nderkombetar	
	6 1731	914.1BK300	Rezervim hoteli, restoranti, paketa turistike	
	7 1740	914.1BK300	Transport mallrash rugor për pale të treta	
	8 1750	914.1BK300	Bileta transporti rugor nderkombetar	
	9 1761	914.1BK300	Transport dhe shpërndarje e pakove posta...	
	10 1771	914.1BK300	Bileta transporti detar nderkombetar	


Page Size: 10

# ESS Automation Project

## Calculation and intermediate Output control

→ [boplive.bankofalbania.org/#ViewID=BOP\\_TRADE\\_IMPORT\\_GEN\\_MERCHANDISE\\_COST\\_OF\\_TRANSPORT\\_BY\\_METHOD\\_ListView&ObjectClassName=STCS.Module.BusinessObjects.STCS.BOP\\_TRADE\\_IMPORT\\_GEN\\_MERCHANDISE\\_COST\\_OF\\_TRANSPORT\\_BY\\_METHOD](http://boplive.bankofalbania.org/#ViewID=BOP_TRADE_IMPORT_GEN_MERCHANDISE_COST_OF_TRANSPORT_BY_METHOD_ListView&ObjectClassName=STCS.Module.BusinessObjects.STCS.BOP_TRADE_IMPORT_GEN_MERCHANDISE_COST_OF_TRANSPORT_BY_METHOD) ☆ e

Apps

 **F-Statistics** Color & Font My Account

1 ACTIVE LOAD CYCLE: 20190430      2 GENERAL DATA VALIDATION: 20403      3 CALCULATION: 285      4 FINALIZE CALCULATION: TO DO

[Import Gen Merchandise Trade P...](#) / [Import Gen Merchandise Trade C...](#) / [Process In Import Breakdown By...](#) / [Process In Import Coeff By Cha...](#) / [Import Gen Merchandise Cost of...](#)

### Import Gen Merchandise Cost of Transport By Method Output

New

<input type="checkbox"/>	SID	TRANSPORT_METHOD_...	TPT_MOT_BRD_CTY	TRANSPORT_COEFFICIE...	TOTAL_COST_OF_TRANS...	COST_OF_TRANSPORT_...	STATUS_INDICATOR	LOAD_CYCLE_ID	CALCULATION_CYCLE_ID
<input type="checkbox"/>	20717	Air	AL	0.002205		0.000000		20190430	285
<input type="checkbox"/>	20718	Air	BE	0.000000		0.000000		20190430	285
<input type="checkbox"/>	20719	Air	DE	0.007765		0.000000		20190430	285
<input type="checkbox"/>	20720	Air	ES	0.000039		0.000000		20190430	285
<input type="checkbox"/>	20721	Air	GA	0.000009		0.000000		20190430	285
<input type="checkbox"/>	20722	Air	GB	0.000009		0.000000		20190430	285
<input type="checkbox"/>	20723	Air	HR	0.000000		0.000000		20190430	285
<input type="checkbox"/>	20724	Air	IL	0.000019		0.000000		20190430	285
<input type="checkbox"/>	20725	Air	NL	0.000011		0.000000		20190430	285
<input type="checkbox"/>	20726	Air	RU	0.000000		0.000000		20190430	285

< 1 2 3 4 5 6 7 ... 14 15 16 >      PAGE SIZE 10

[Create Filter](#)

- AUTHORIZATION PANEL
- Authorization Dashboard
- PROCESS
- CURRENT PERIOD INPUT DATA
- CURRENT PERIOD PRE-CALCULATION
- OUTPUTS
- BOP
  - Wages & Compensation
  - Emigrant Deposits
  - Government Grants & Expenditure
  - Passanger Transport
  - Premium & Claims
  - Remittance
  - Trade
  - Coefficients
  - Adjustment and Conversion
  - General Merchandise
  - Import
  - Adj And Conv
  - Cost of Transport By Method**
  - Export

# ESS Automation Project

## Visualization of reports

- Word
- Excel
- PowerPoint
- PDF
- TIFF file
- MHTML (web archive)
- CSV (comma delimited)
- XML file with report data
- Data Feed

boplive.bankofalbania.org/#ViewID=STCS\_REPORTING\_DATA\_ListView@ObjectClassName=STCS.Module.BusinessObjects.STCS.STCS\_REPORTING\_DATA

Apps

F-Statistics

Color & Font My Account

ACTIVE LOAD CYCLE: 20190430 GENERAL DATA VALIDATION: 10403 CALCULATION: 285 FINALIZE CALCULATION: TO DO

Authorization Dashboard / Reporting Data

Reporting Data

New [Filter] [X] [Link] Text to search...

<input type="checkbox"/>	CAPTION	NAME	ACTIVE	CREATED DATE	UPDATED DATE	USER STARTED	USER UPDATED	LOAD	REPORTING	CALCULATION
▶ REPORT CATEGORY: CEFTA-FDI (Count=6)										
▶ REPORT CATEGORY: CEFTA-Trade (Count=6)										
▼ REPORT CATEGORY: EUROSTAT-BOP (Count=4)										
<input checked="" type="checkbox"/>	ID-24794	T1 -Monthly BOP	<input checked="" type="checkbox"/>	24/09/2020		DOMAIN\jmele		20190430	285	285
<input type="checkbox"/>	ID-24795	T2.1 -Quarterly B...	<input checked="" type="checkbox"/>	24/09/2020		DOMAIN\jmele		20190430	285	285
<input type="checkbox"/>	ID-24796	T2.2 -Quarterly IIP	<input checked="" type="checkbox"/>	24/09/2020		DOMAIN\jmele		20190430	285	285
<input type="checkbox"/>	ID-24797	T3 - ITS	<input checked="" type="checkbox"/>	24/09/2020		DOMAIN\jmele		20190430	285	285
▶ REPORT CATEGORY: EUROSTAT-FDI (Count=5)										
▶ REPORT CATEGORY: FMN-BOP (Count=1)										
▶ REPORT CATEGORY: FMN-CPIS (Count=19)										

1 2 PAGE SIZE 10


boplive.bankofalbania.org/Controls/ReportingServicesForm.aspx

Reporting Date: 3/31/2019 12:00:00 AM

FREQ	ADJUSTMENT	REF_AREA	COUNTERPART_AREA	REF_SECTOR	COUNTERPART_SECTOR	FLOW_STOCK_ENTRY	ACCOUNTING_ENTRY	INT_ACC_ITEM	FUNCTIONAL_CAT	INSTR_ASSET	MATURITY	UNIT_MEASURE	CURRENCY_DENOM	VALUATION
M	N	AL	W1	S1	S1	T	C	CA	.Z	.Z	.Z	ALL	.T	.X
M	N	AL	W1	S1	S1	T	D	CA	.Z	.Z	.Z	ALL	.T	.X
M	N	AL	W1	S1	S1	T	B	CA	.Z	.Z	.Z	ALL	.T	.X
M	N	AL	B5	S1	S1	T	C	G	.Z	.Z	.Z	ALL	.T	.X
M	N	AL	B5	S1	S1	T	D	G	.Z	.Z	.Z	ALL	.T	.X
M	N	AL	B6	S1	S1	T	C	G	.Z	.Z	.Z	ALL	.T	.X
M	N	AL	B6	S1	S1	T	D	G	.Z	.Z	.Z	ALL	.T	.X
M	N	AL	D5	S1	S1	T	C	G	.Z	.Z	.Z	ALL	.T	.X
M	N	AL	D5	S1	S1	T	D	G	.Z	.Z	.Z	ALL	.T	.X
M	N	AL	D6	S1	S1	T	C	G	.Z	.Z	.Z	ALL	.T	.X
M	N	AL	D6	S1	S1	T	D	G	.Z	.Z	.Z	ALL	.T	.X
M	N	AL	IB	S1	S1	T	C	G	.Z	.Z	.Z	ALL	.T	.X
M	N	AL	IB	S1	S1	T	D	G	.Z	.Z	.Z	ALL	.T	.X
M	N	AL	JB	S1	S1	T	C	G	.Z	.Z	.Z	ALL	.T	.X
M	N	AL	JB	S1	S1	T	D	G	.Z	.Z	.Z	ALL	.T	.X
M	N	AL	W1	S1	S1	T	C	G	.Z	.Z	.Z	ALL	.T	.X
M	N	AL	W1	S1	S1	T	D	G	.Z	.Z	.Z	ALL	.T	.X
M	N	AL	W1	S1	S1	T	B	G	.Z	.Z	.Z	ALL	.T	.X
M	N	AL	B5	S1	S1	T	C	G	.Z	.Z	.Z	ALL	.T	.X
M	N	AL	B5	S1	S1	T	D	G	.Z	.Z	.Z	ALL	.T	.X
M	N	AL	B6	S1	S1	T	C	G	.Z	.Z	.Z	ALL	.T	.X
M	N	AL	B6	S1	S1	T	D	G	.Z	.Z	.Z	ALL	.T	.X
M	N	AL	D5	S1	S1	T	C	G	.Z	.Z	.Z	ALL	.T	.X
M	N	AL	D5	S1	S1	T	D	G	.Z	.Z	.Z	ALL	.T	.X
M	N	AL	D6	S1	S1	T	C	G	.Z	.Z	.Z	ALL	.T	.X
M	N	AL	D6	S1	S1	T	D	G	.Z	.Z	.Z	ALL	.T	.X
M	N	AL	IB	S1	S1	T	C	G	.Z	.Z	.Z	ALL	.T	.X
M	N	AL	IB	S1	S1	T	D	G	.Z	.Z	.Z	ALL	.T	.X
M	N	AL	JB	S1	S1	T	C	G	.Z	.Z	.Z	ALL	.T	.X
M	N	AL	JB	S1	S1	T	D	G	.Z	.Z	.Z	ALL	.T	.X
M	N	AL	W1	S1	S1	T	C	G	.Z	.Z	.Z	ALL	.T	.X
M	N	AL	W1	S1	S1	T	D	G	.Z	.Z	.Z	ALL	.T	.X
M	N	AL	W1	S1	S1	T	B	G	.Z	.Z	.Z	ALL	.T	.X

# Business continuity considerations

- *Routine dissemination of official statistics will be impacted.*
- *Compilers of official statistics will need to take extra steps to ensure that user confidence in official statistics is not affected.*
- *Users need to be assured that every effort has been made to compile reliable statistics based on the available data, and that any data gaps have been addressed using appropriate and accepted methodologies that ensure the compilation of reliable data.*
- *Complete transparency is critical at all times, but especially during this challenging period.*
- *Make better use of existing data.*
- *Leveraging on innovation: a) integrating supplementary data, b) accelerate the production of official statistics.*
- *Enhance data sharing and cooperation among statistical agencies.*
- *Improved platforms to exchange international experience/methodology.*



Thank you for your attention!

**Argita Frashëri**  
[afrasheri@bankofalbania.org](mailto:afrasheri@bankofalbania.org)